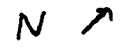
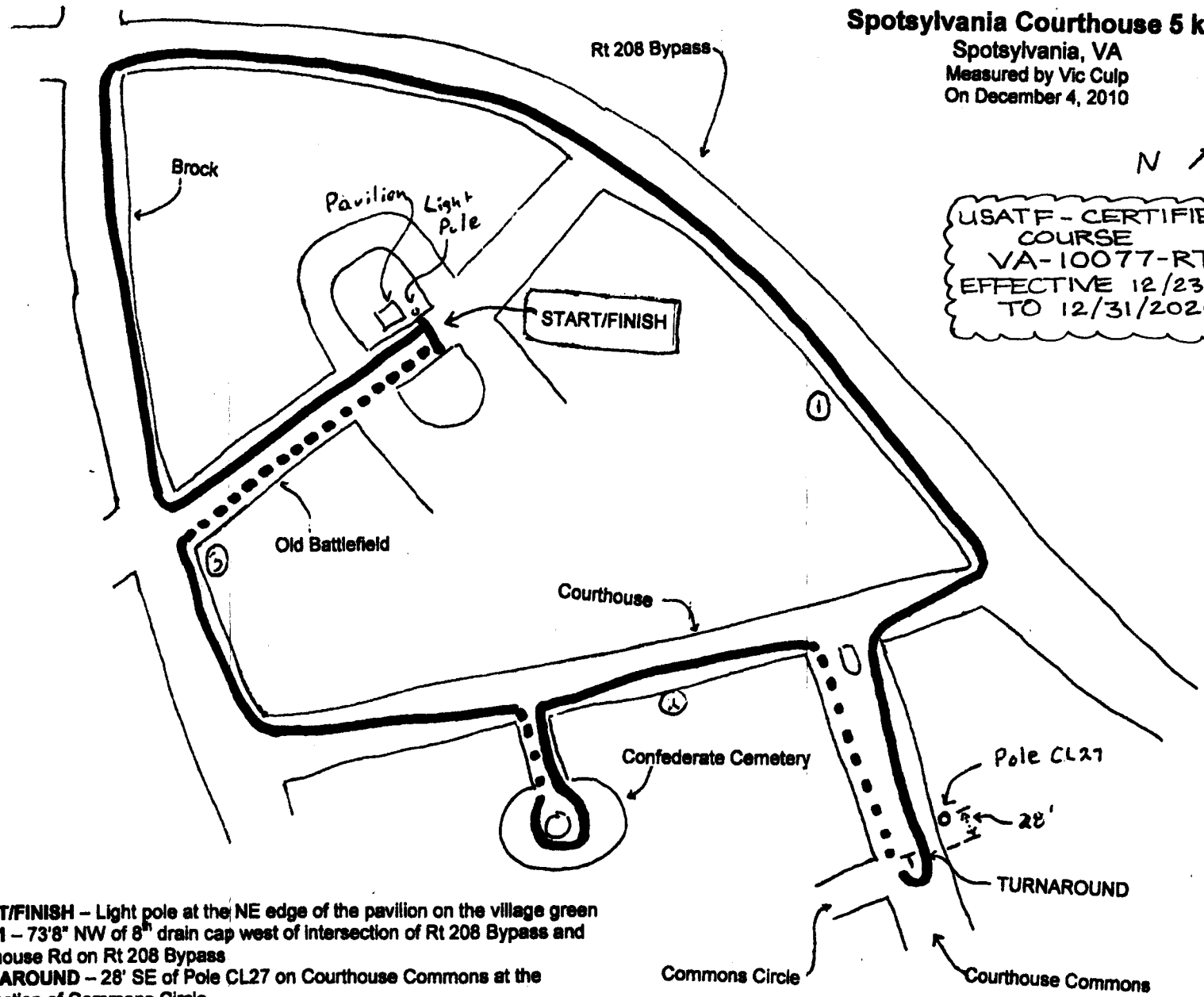


**Spotsylvania Courthouse 5 km**  
 Spotsylvania, VA  
 Measured by Vic Culp  
 On December 4, 2010



USATF - CERTIFIED  
 COURSE  
 VA-10077-RT  
 EFFECTIVE 12/23/2010  
 TO 12/31/2020



**START/FINISH** - Light pole at the NE edge of the pavilion on the village green  
**MILE 1** - 73'8" NW of 8<sup>th</sup> drain cap west of intersection of Rt 208 Bypass and Courthouse Rd on Rt 208 Bypass  
**TURNAROUND** - 28' SE of Pole CL27 on Courthouse Commons at the intersection of Commons Circle  
**MILE 2** - 493'7" E of the cement post on NE side of entrance road to Confederate Cemetery. Cement post is N of cemetery gate.  
**MILE 3** - 69'6" NW of 1<sup>st</sup> drain cap south of Old Battlefield on Brock Rd